

# Revolution<sup>©</sup>

Doors with continuous frame



STAINO & STAINO  
Doors and systems for interiors

# DOOR revolution<sup>©</sup>

**REVOLUTION WOOD** It is esthetically outstanding because the frame is made from a single, seamless element. This peculiarity makes Revolution<sup>©</sup> a unique door, different from all others on the market. The elimination of the classic joints in the casing, combined with the fact that the panel is flush to the frame, endows the door with a monolithic look which is the expression of a minimalist taste, but also gives the observer the sensation of standing before a work of design crafted to endure.

**TECHNIQUE AND FUNCTION** Revolution<sup>©</sup> has a thick panel (53 millimeters) and is equipped with an extruded aluminum load-bearing frame in which three disappearing adjustable hinges are lodged. Three hinges capable of bearing over 90 kilos are provided even for the standard height 210 centimeter doors; Revolution<sup>©</sup> doors with a greater height have additional hinges to improve the sturdiness of the door.





## HANDLE WITH INSERT

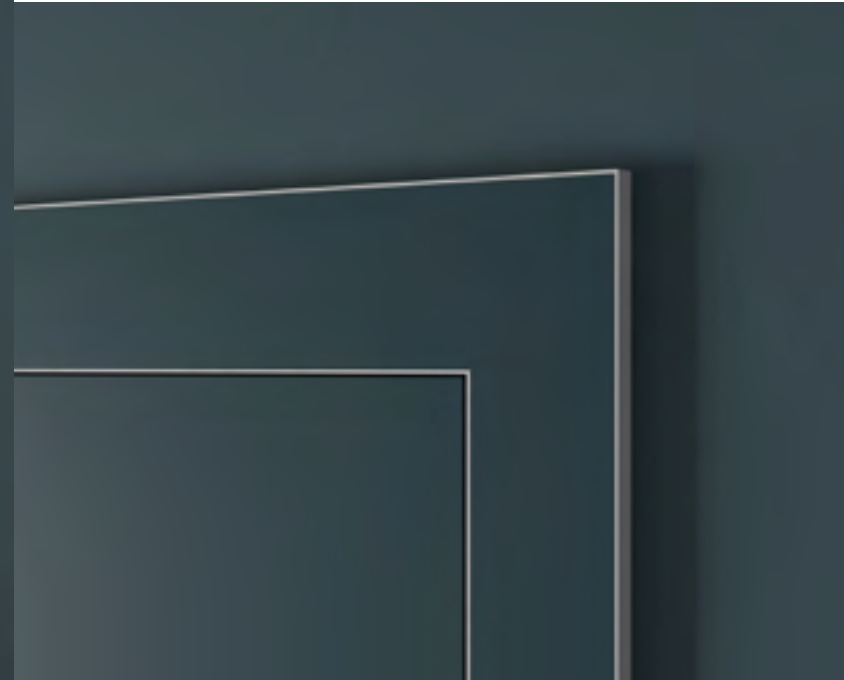
The Revolution® handle is made of aluminum machined from billet and contains a coplanar insert made of the same material provided for the door.

The Revolution® handle can be lacquered and anodized in the customer's preferred finish.



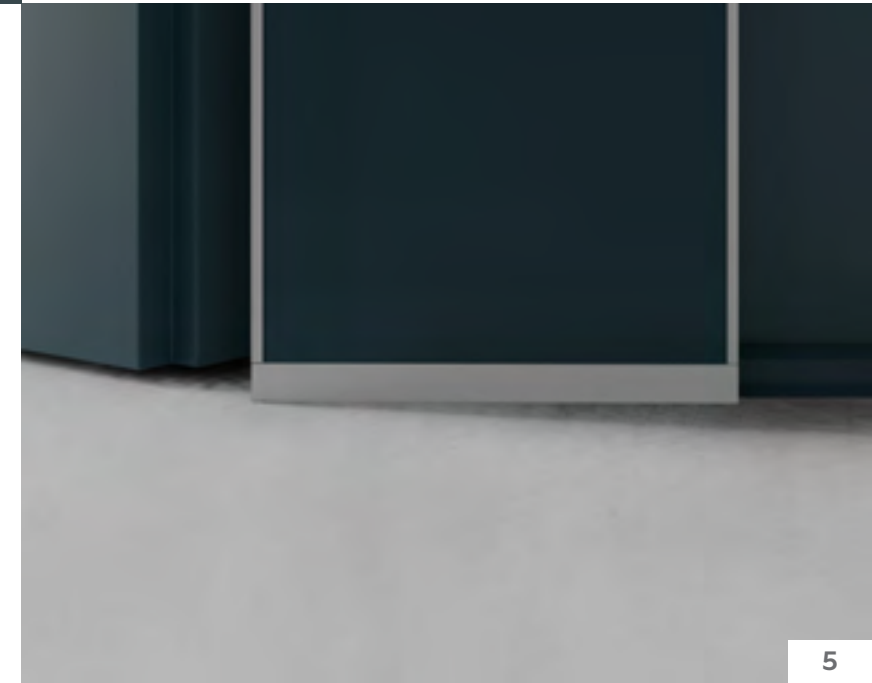
## UNBROKEN MDF CASING

The wooden frame inserted in the aluminum casing is produced in a single piece, the absence of cuts in the continuous frame makes the design of the Revolution® door unique.



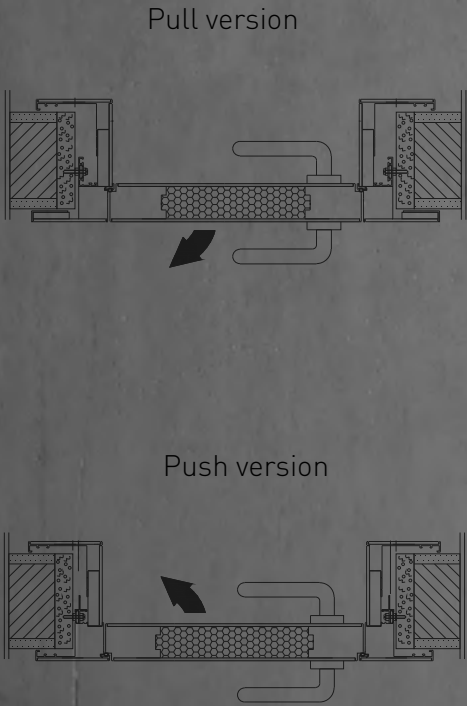
## PROTECTED FRAME

The aluminum structure isolates and protects the wooden frame, it avoid the typical swelling of wooden frames and frames that can absorb water during the floor's cleaning. This exclusive technical feature guarantees the integrity of the door over time.



# HINGED REVOLUTION® DOOR

**TECHNIQUE AND FUNCTION** Revolution® has a thick panel (53 millimeters) and is equipped with an extruded aluminum load-bearing frame in which three disappearing adjustable hinges are lodged. Three hinges capable of bearing over 90 kilos are provided even for the standard height 210 centimeter doors; Revolution® doors with a greater height have additional hinges to improve the sturdiness of the door and to guarantee its correct functioning over time.





REVOLUTION  
PA01 | varnished MDF RAL 9003 | MA - REVOLUTION

# REVOLUTION® HANDLE

The Revolution® handle is made of aluminium from billet and contains a flush insert produced in the same material as the panel. Exactly like the door frame, the edge of the handle can be the same color as the insert or have a contrasting finish.





# PHOTOS FROM OUR COSTUMERS

Some photos taken by our customers.



REVOLUTION  
PA01 | varnished MDF RAL 9003 | MA - REVOLUTION

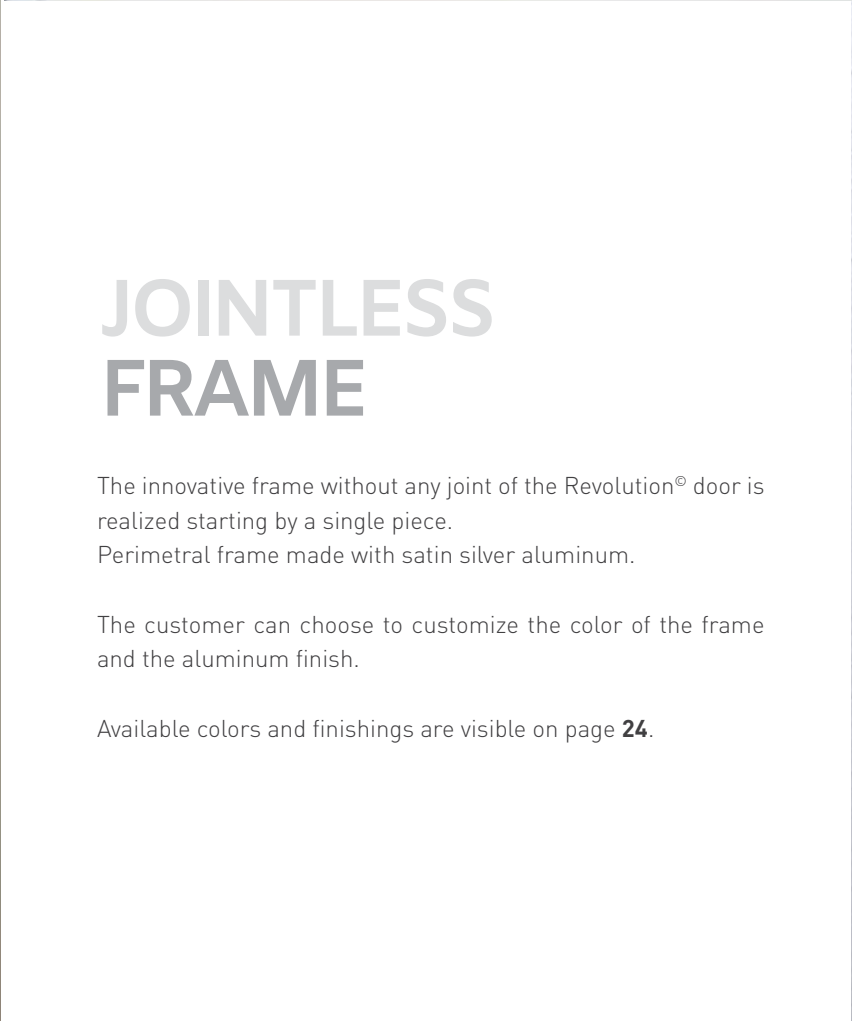


## COORDINATED FINISH

The Revolution® handle in in satin silver aluminum is made with a wooden insert coordinated with the panel's finish. Satin chromed privacy pawl.

The customer can choose to customize the color of the insert and the finish of the aluminum and privacy pawl.

The available handles are visible on page **20**.



## JOINTLESS FRAME

The innovative frame without any joint of the Revolution® door is realized starting by a single piece. Perimetral frame made with satin silver aluminum.

The customer can choose to customize the color of the frame and the aluminum finish.

Available colors and finishings are visible on page **24**.





## PUSH &PULL VERSIONS

The Revolution® door is available with push opening and pull opening, in both of these versions, the panel remains coplanar to the external perimeter frame.





## REVOLUTION® SLIDING DOORS

The Revolution® door is also available in an internal sliding version, the perimeter frame can be made without joints, from a single piece.

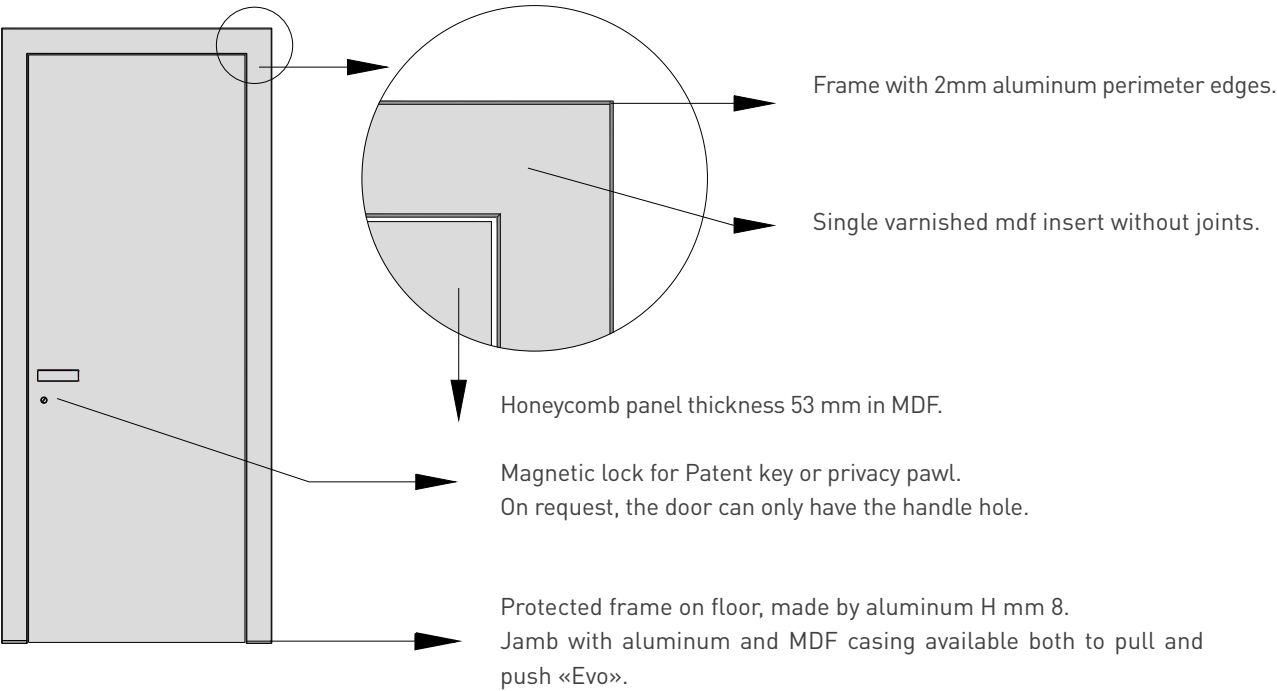


# DATA SHEET

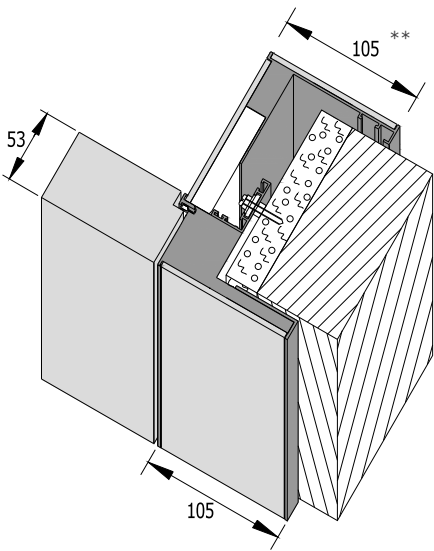
Monolithic design thanks to the continuous perimeter frame.  
The Revolution® door is equipped with an extruded aluminum frame covered with a continuous wooden frame, made in one piece, without joints in its continuous frame.

Door with a strong thickness (53 mm), concealed hinges with a capacity of over 90 kg, supporting frame made by extruded aluminum that protects the wooden parts, exclusive solid aluminum handle with insert coordinated with the door panel.

The Révolution® door is made to measure to the millimeter.



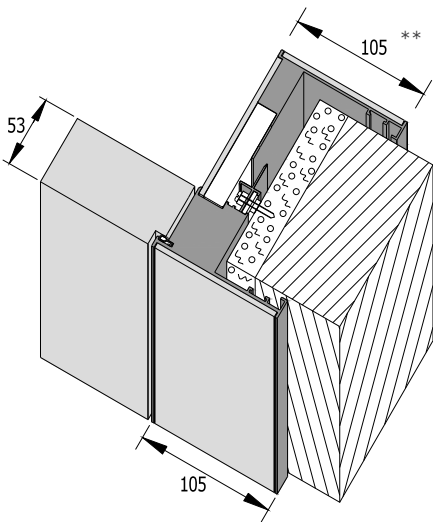
## FRAME DIMENSIONS



### PULL VERSION

External dimensions of the standard\* frame

Empty space c/frame:	cm 70/80/90 x 215 H
External frame:	cm 69/79/89 x 214,5 H
Clear opening:	cm 59,7/69,7/79,7 x 209,8 H

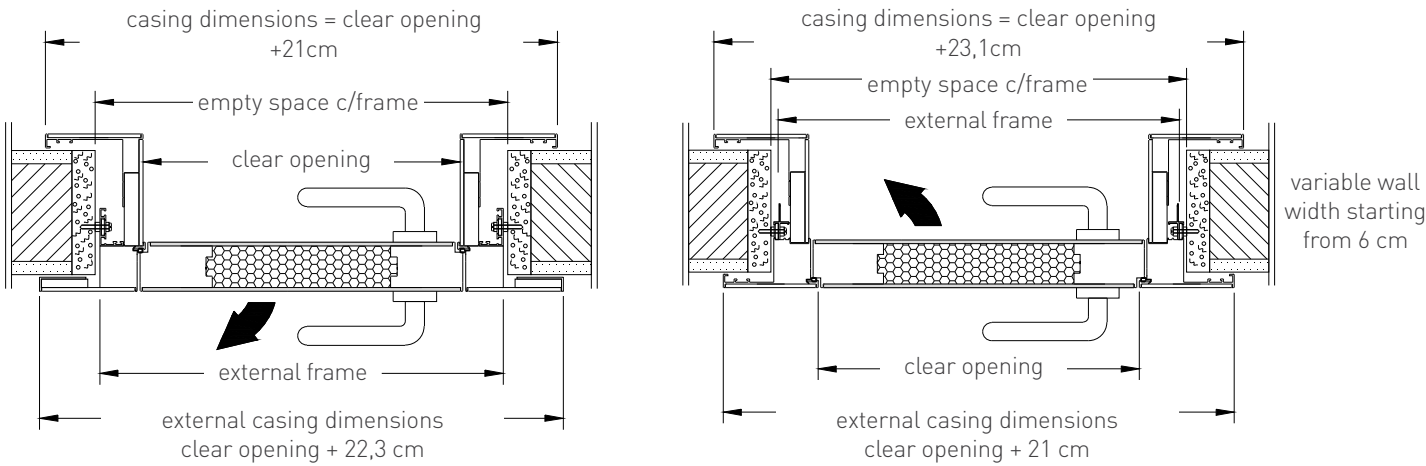


### PUSH «EVO» VERSION

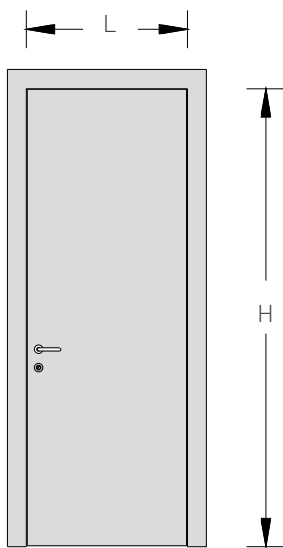
External dimensions of the standard\* frame

Empty space c/frame:	cm 70/80/90 x 215 H
External frame:	cm 69/79/89 x 214,5 H
Clear opening:	cm 59,5/69,5/79,5 x 209,7 H

\* on request it is possible to customize the height of the door up to a maximum of 300 cm.  
\*\* the size of the frame can be customized on request from 70 mm to 105 mm.



# DIMENSIONS AND SUPPLEMENTS

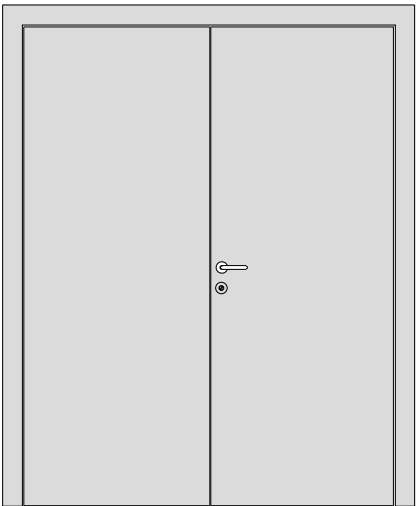


Made-to-measure door:

- Up to cm 90 x 220 H
- Up to cm 80 x 240 H
- Up to cm 80 x 270 H
- Up to cm 80 x 300 H

Door with transom window:

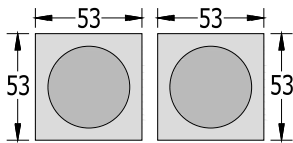
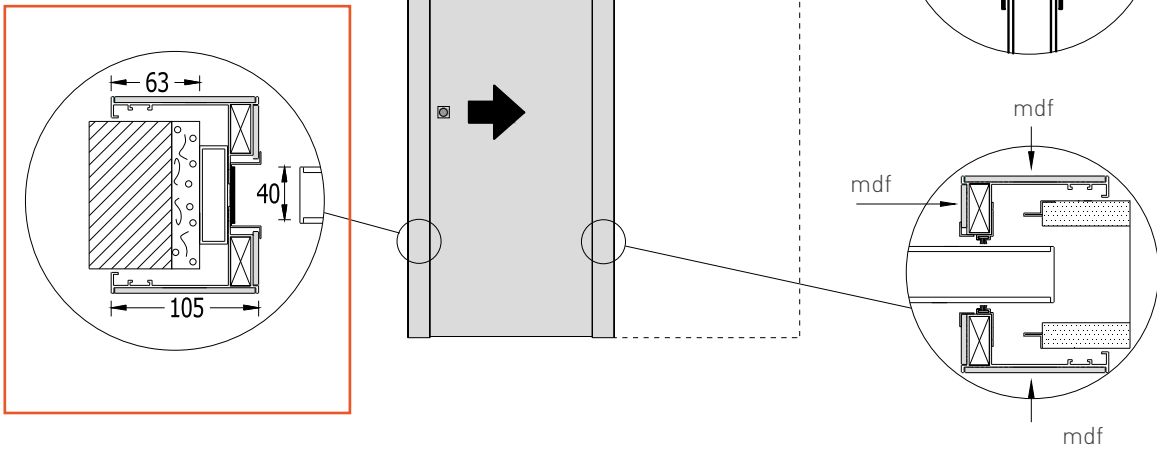
+ 50% surcharge compared to the price of the made-to-measure door



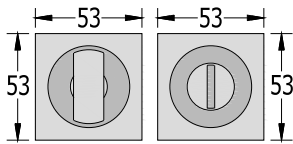
Double hinged door + semi-fixed with posts:

Surcharge compared to single door + 90%

# SLIDING VERSION INSIDE WALL



Standard niches

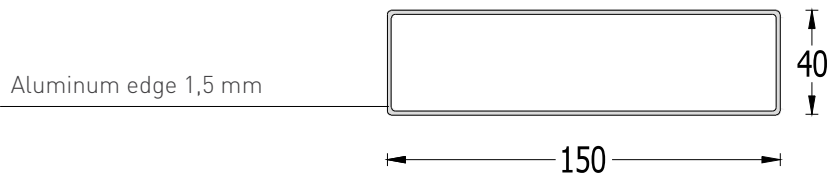
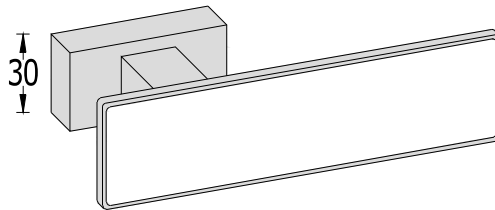
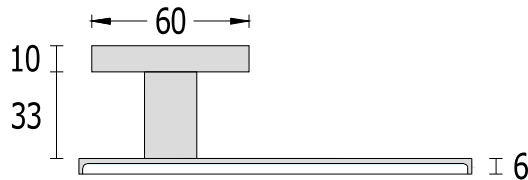


Niches with closing pawl

# REVOLUTION® HANDLE

The Revolution® handle made in aluminum from billet, with the same finish of the door casing:

- Solid aluminum handle, without insert
- Handle with matt lacquered MDF insert
- Handle with glossy or satin lacquered glass insert
- Satin or glossy chrome privacy pawl



Some combinations of frames and inserts can be viewed on pages **22** and **23**



# HANDLES

The Revolution® handle is made of aluminum from billet and contains an insert of the same material provided for the panel. However, it is possible to customize the Revolution® door with the handle that the customer prefers.



TOTAL by Olivari



RADIAL by Olivari



H 5015 by Fusital  
design A.Citterio.



QUADRA



REVOLUTION®



SIRIO



H 352 by Fusital  
design O. Decq - B. Cornette.



CONO



H 5014 by Fusital



1. Aluminum’s finish

**PA10**  
Dark bronze

**PA03**  
Matt black

**PA02**  
Matt white

1. Aluminum’s finish

**PA03**  
Matt black

**PA10**  
Dark bronze

**PA01**  
Glazed silver

2. Panel ’s finish

**RAL 9005**  
Black varnished

**RAL 9003**  
White varnished

**RAL 6004\***  
Green blue varnished

2. Panel ’s finish

**SHADED WHITE\***  
Shaded White® color  
varnished

**RAL 6027\***  
Miami green varnished

**RAL 7006\***  
Grey brown varnished

\* finish available on sample colours

\* finish available on sample colours



# FINISHES

Both of panel's and frame's finished are available in sample Matt RAL colours, the standard finish of aluminum elements is glazed silver, although is available in optional versions: matt white, matt black, bronze or corten.

## Available finishes for our Revolution®doors

1.

2.

### 1. Finitura del profilo



**PA01**  
Glazed silver



**PA02**  
Matt white



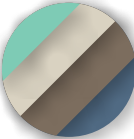
**PA03**  
Matt black



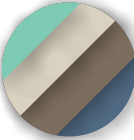
**PA09**  
Corten



**PA10**  
Dark bronze



**RAL ON YOUR CHOICE\***  
Varnished samples colours\*



**NCS ON YOUR CHOICE\***  
Varnished samples colours\*



**RAL 9003**  
White varnished

\* finish available on sample colours

# EXAMPLES OF AVAILABLE COMBINATIONS

The costumer can choose the panel and frame's finish in order to have the optimal combination for anyone needs.



frame **PA10** - panel **RAL9005**



frame **PA03** - panel **RAL9003**



frame **PA02** - panel **RAL6004**



frame **PA03** - panel **SHADED WHITE®**



frame **PA10** - panel **RAL6027**



frame **PA01** - panel **RAL7006**



STAINO&STAINO SRL Via Danubio, 21/23/25  
59100 Prato - Italy | Tel +39 0574 69 39 38  
Fax +39 0574 69 43 55

[www.stainoestaino.com](http://www.stainoestaino.com)

[amministrazione@stainoestaino.it](mailto:amministrazione@stainoestaino.it)  
[commerciale@stainoestaino.it](mailto:commerciale@stainoestaino.it)  
[export@stainoestaino.it](mailto:export@stainoestaino.it)