

Master

Varnished glass doors

STAINO & STAINO
Doors and systems for interiors

INDEX

Introduction to the Master doors

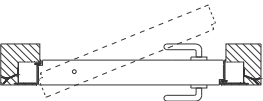
04

Master flush door



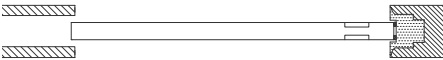
06

Master pivot door



10

Internal sliding Master door



12

External sliding Master door



14

Beveled glass panels

16

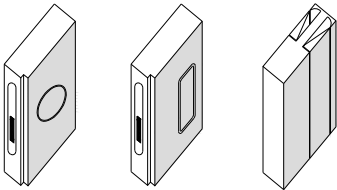
Master with boiserie

18

Photos of our costumers

22-29

30-33



Coplanar handles

MA13

MA15

34-41

Data sheets | collections

- hinged door collection
- internal sliding door collection
- external sliding door collection
- sliding openings
- pivot collection

42-47

Data sheets | handles

- coplanar handles MA13 and MA15
- traditional handles

48-51

Dseigns for varnished glasses

52-53

Aluminium profile&glasses finishes

54-65

Varnished glasses&mirrors finishes

MASTER
PA01 | varnished glass CL03 | MA - QUADRA

DOOR master

THE MASTER DOOR is characterized by the flatness between the glass and the perimeter profile of the door.

The extruded aluminum edge remains visible for only 2.5 millimeters, but its section extends inside the door with very large dimensions, such as to allow the creation of doors with a height of up to 350 cm.

The quality and sturdiness are at the top on every aspect of the product, tempered glass, safe and resistant, retractable hinges with oversized capacity, and a totally tailored artisan construction that does not include standard measures.

By choosing the Master doors, the customer is free to customize every aspect of the door, in addition to the wide range of finishes and colors provided, sample colors can be produced for both the glass and the aluminum parts.

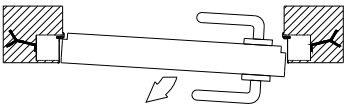
MASTER
PA01 | varnished glass CL08 | MA - REVOLUTION

HINGED DOOR MASTER

The Master hinged door is always made to measure with a height of up to 350 cm, it can be made flush with the wall or with a frame and perimeter trims. both types are available with push or pull opening. The Master swing doors are also available in the two-leaf version, with or without transom window.

For the handles, numerous options are available, including the “Revolution” model handles with glass insert coordinated with the door. The customer still has the option of requesting a specific handle model on the market even if not provided in our catalog.

Pull version



Push version



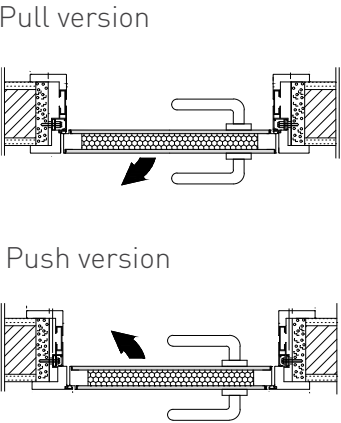
MA - REVOLUTION



MASTER
PA01 | varnished glass RAL 1018 | MA - H5014

FLUSH PANEL WITH CASING FRAMES

The door panel is flush to the casing in both the push and the pull versions.
Thanks to this peculiarity, even in a situation where doors with push and pull opening are placed side by side, the flatness on the external side will be maintained.

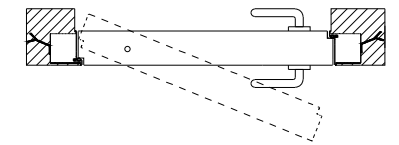


MASTER PIVOT

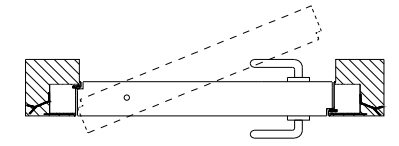
The Master pivot door is always made to measure with a height of up to 350 cm and a width of up to 170 cm, it can be installed with a door frame flush with the wall and push or pull opening, alternatively it is possible to mount the door without a frame. stop with the possibility of opening in both directions.

The Master pivot door can be equipped with the «soft close» system, an invisible accessory that does not require any break in the floor; in this way the movement of the door is mechanically controlled, the door gently slows down when closing and is equipped with an integrated stop with stop at +/- 90 ° in order to keep the door in the open position.

Pull version

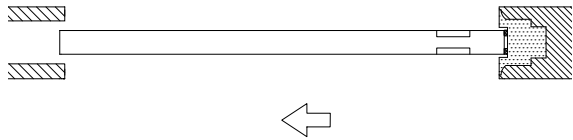


Push version

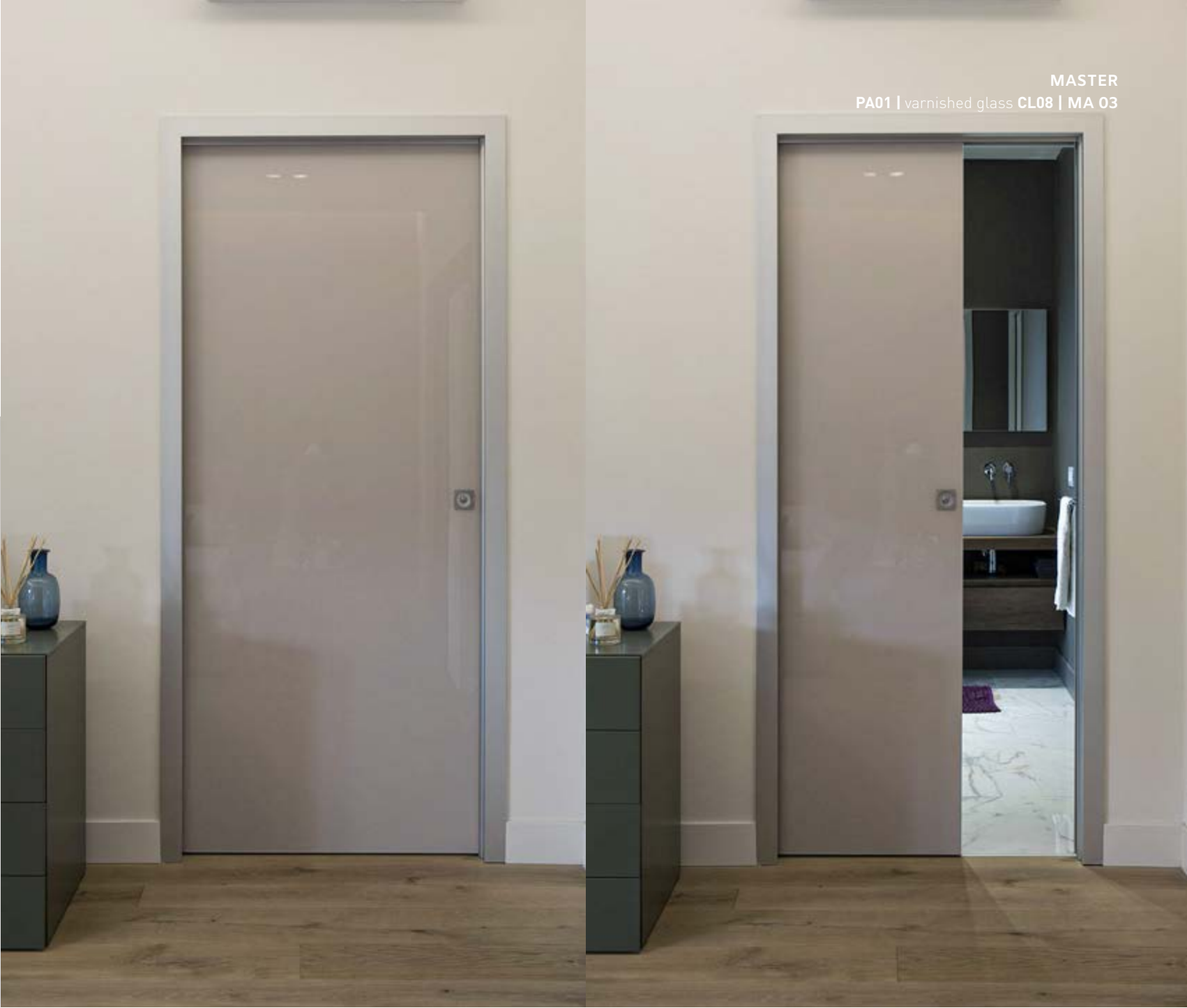


SLIDING MASTER FOR BOXES FLUSH TO THE WALL

The internal wall sliding Master door can be prepared for insertion into sliding boxes that do not require the assembly of the architraves. Upon customer request, the company can provide both the door and the sliding counterframe.



MASTER
PA01 | varnished glass CL03 | MA 03



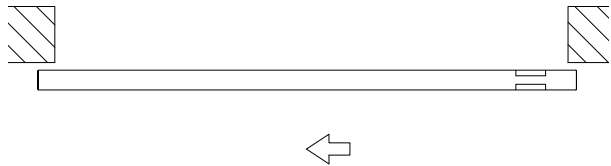
MASTER
PA01 | varnished glass CL08 | MA 03

SLIDING MASTER FOR CLASSIC BOXES

The internal wall sliding door Master can be prepared for insertion into classic sliding boxes of any other brand, the door is equipped with a frame and casing in extruded aluminum. The aluminum casings are available in a wide range of finishes, or they can be made in a sample opaque color.



SLIDING MASTER FOR EXTERNAL WALL



The external wall sliding Master door is always made to measure without feasibility limits, the finish can be different between one side of the door and the other. The wide range of glass available includes glass decorated with DV photographic printing which can be customized with images and designs on customer request.



BEVELED GLASS PANEL

The perimeter bevel is an optional process that can be carried out on glossy lacquered glass and on matt lacquered satin glass.

The different reflections created by the flat parts and the bevelled parts of the glass, create gaps of light that emphasize the brilliance of the glass, enriching the design of the door.

Particularly elegant, the tone-on-tone effect of the satin lacquered glass version that alternates the opacity of the flat part of the glass to the bright one of the beveled edges.



MASTER WITH BOISERIE

Master door can be combined with the paneling system we costum produce based on the client's design.

MASTER + BOISERIE
PA01 | varnished glass RAL 1021 | MA - REVOLUTION



DOORS PREPARED FOR CUSTOMIZED COVERINGS

The Master doors, both in the hinged and pivoting version, can be set up to receive the customer's material (wood, marble, etc.) directly during installation, with customized coating thickness up to 15 mm. This solution is particularly suitable in cases where it is desired to cover the wall and the door with the same material.

Optional hinges and door closer systems are available, depending on the weight of the chosen covering material.

PHOTOS OF OUR COSTUMERS

Some photos taken by our costumers

WHITE FLAT DESIGN PROJECT

In this project, flush-to-wall doors from the Master collection were created with extra-clear tempered glass lacquered in pure white CL03, the frames were prepared to allow the installation of the recessed skirting board.

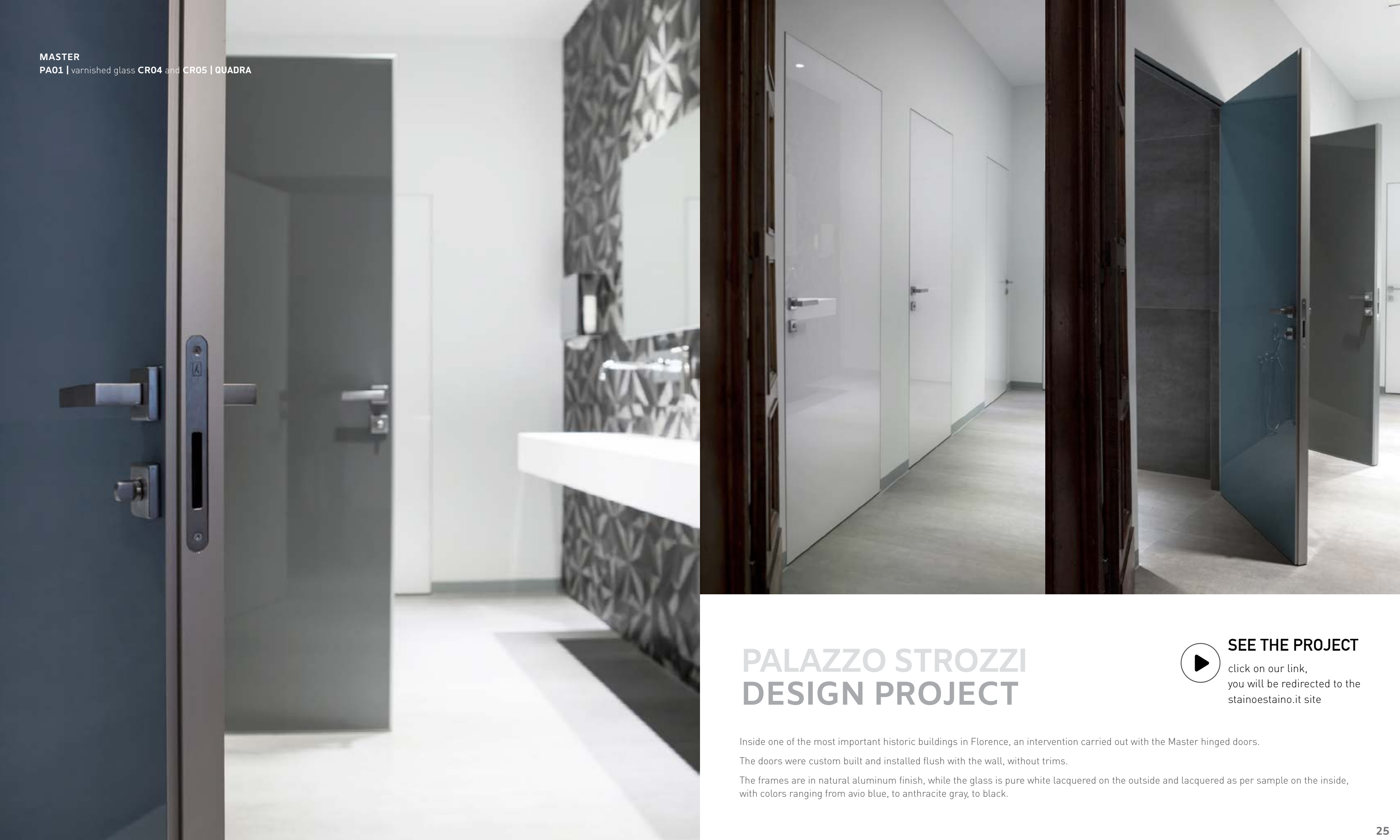


SEE THE PROJECT

click on our link, you will be redirected to the stainoestaino.it site

MASTER
PA01 | varnished glass CL03 | QUADRA

MASTER
PA01 | varnished glass CR04 and CR05 | QUADRA



PALAZZO STROZZI DESIGN PROJECT



SEE THE PROJECT

click on our link,
you will be redirected to the
stainoestaino.it site

Inside one of the most important historic buildings in Florence, an intervention carried out with the Master hinged doors.
The doors were custom built and installed flush with the wall, without trims.

The frames are in natural aluminum finish, while the glass is pure white lacquered on the outside and lacquered as per sample on the inside,
with colors ranging from avio blue, to anthracite gray, to black.

MASTER
PA03 | varnished glass J.P.Blue | H352

BLACK&BLUE DESIGN PROJECT

A prestigious apartment where tailoring is present in all design choices. Flush-to-the-wall doors from the Master collection were created with extra-clear tempered glass lacquered in the sample color «J.P.Blue», perimeter profile of the door and frame lacquered in matt black, H352 handles by Fusital, design O.Decq. and B. Cornette.



SEE THE PROJECT

click on our link, you will be redirected to the stainoestaino.it site





MASTER
PA01 | MIRROR and varnished glass CL09 | MA 13

TWO-TONE PANELING

Other Master doors were made with tempered glass engraved with a black back-varnished metropolis decoration.

For the walk-in closet door, the mirror coating was chosen for the internal side coupled with the coplanar handle MA13.



SEE THE PROJECT

click on our link, you will be redirected to the stainoestaino.it site



COPLANAR HANDLE

MA13

The «MA 13» coplanar handle is available in all the materials provided for the door, it is also possible to have the system complete with a lock with through privacy closure or only from the inside.

MASTER
PA01 | panel's material **choose by costumer** | MA 13



click on our link to see the operating video of the MA13 coplanar handle

Too see the technical specifications of this type of handle, please visit p. 43.

COPLANAR HANDLE

MA15

The coplanar handle MA15 is available in 6 different sizes. The customer can differentiate the handle on both sides of the door, choosing between various sizes and materials.

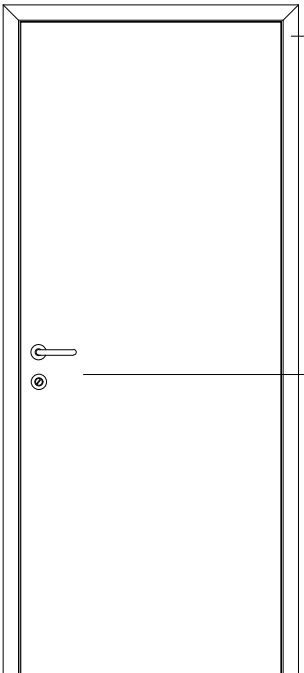
MASTER
PA01 | varnished glass CL03 | MA 15



click on our link to see the operating video of the MA15 coplanar handle

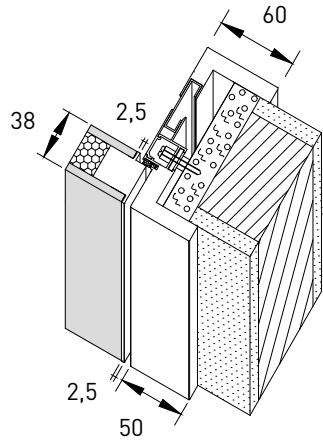
To see the technical specifications of this type of handle, please visit p. 44.

DATA SHEETS



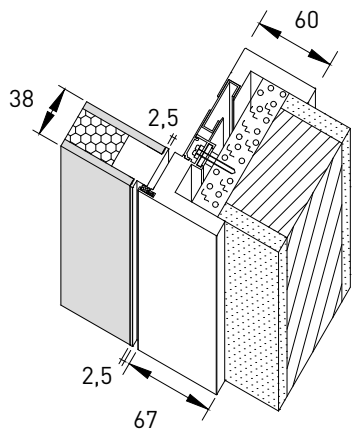
Door with 2.5 mm aluminum perimeter profile.
Frame with wall jamb, concealed adjustable hinges.

Magnetic lock for Patent key or privacy latch.
On request, the door can only have the handle hole.



SECTION PULL DOOR

Jamb, with trims in satin silver aluminum available in pull or push version EVO.

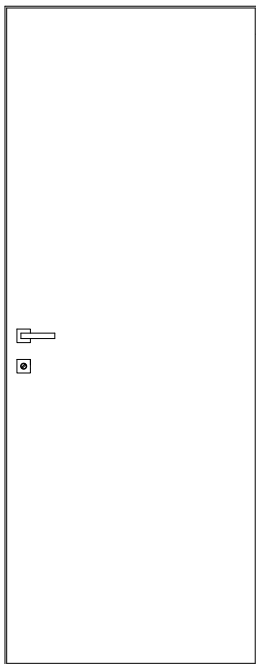


SECTION «EVO» PUSH DOOR

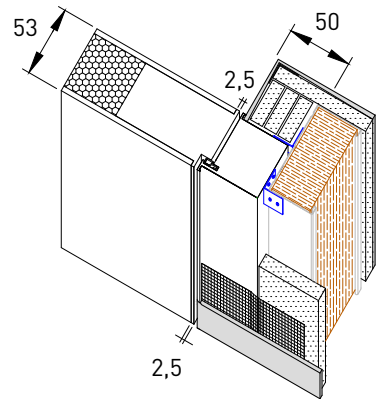
HINGED MASTER WITH CASING

As an alternative to the standard flush-to-the-wall frame, on the hinged doors of the Master collection, the customer can choose a variant, the frame with aluminum casing that allows the door to be mounted on a normal wooden counter frame. This option does not involve surcharges.

Hinged door with aluminum door and coplanar paneling on two sides, the customer can choose, at the same price, the frame flush with the wall for masonry or plasterboard, or the frame with jamb and casing in satin silver aluminum.



Door with 2.5 mm aluminum perimeter profile, frame to be walled in, concealed adjustable hinges.

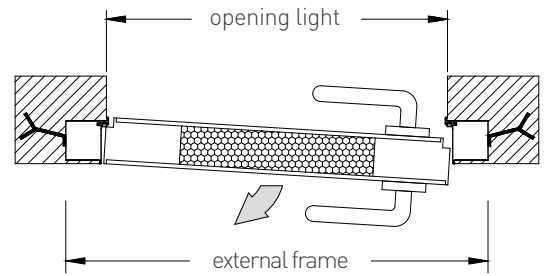


FLUSH HINGED MASTER DOOR

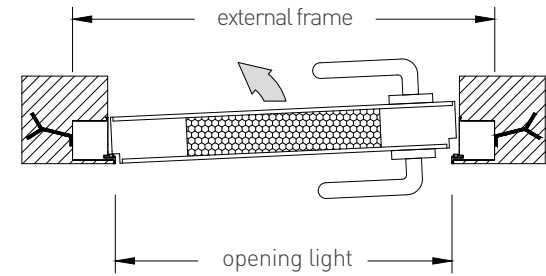
External / internal flush frame as standard, in satin silver aluminum compatible for masonry or plasterboard walls.
The frame can be mounted to pull or push.
Example: Right to pull = Left to push

STANDARD REFERENCE MEASURES :
External frame: cm 70/80/90 x 215 H
Opening light: cm 60/70/80 x 210 H

PULL OPENING DETAIL



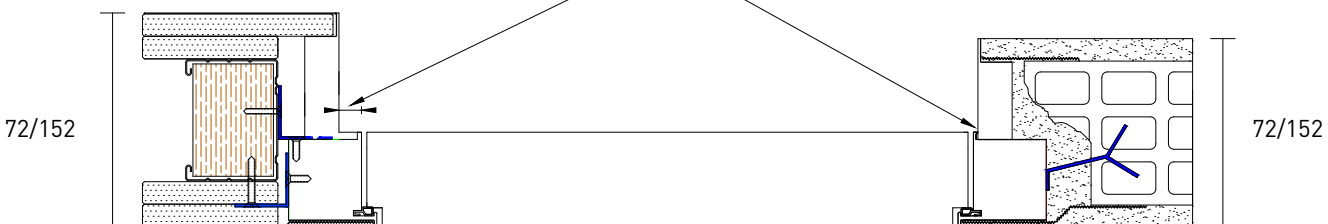
PUSH OPENING DETAIL



OPTIONAL PROFILE FOR FRAME EXTENSION:

Raw aluminum profile, to be painted like the wall, made to measure with depth varying from 72 to 152 mm.
The use of the optional profile facilitates the finishing of the wall thickness, optimizing working times on site.

The optional profile can be positioned at the distance requested by the customer, in relation to the presence of the skirting board and its thickness.



VARNISHED GLASSES AND MIRRORS: CL: Varnished glass SP: Mirror DV: Varnished design CLB: Beveled varnished glass

- CL

Varnished glass 2 sides our colors
- CL11

Varnished glass Ral to sample 2 sides
- Mineralized glass bronze 2 sides
- SP01,02,03

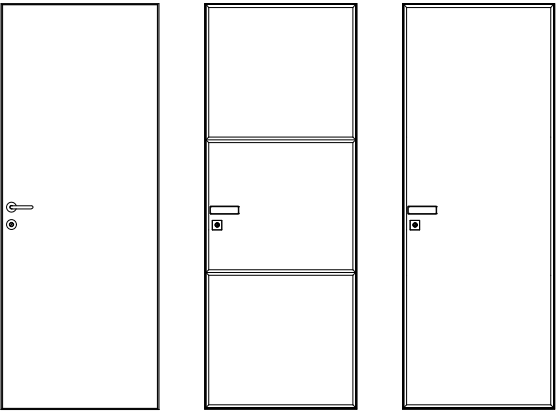
Mirror silver/bronze/fumé 2 sides
- CL12

Varnished extra-clear satin glass 2 sides, white or Ral to sample
- SP5,6 - CL9,10

Silvered nervuré or Metropolis glass, or Ral.
- DV

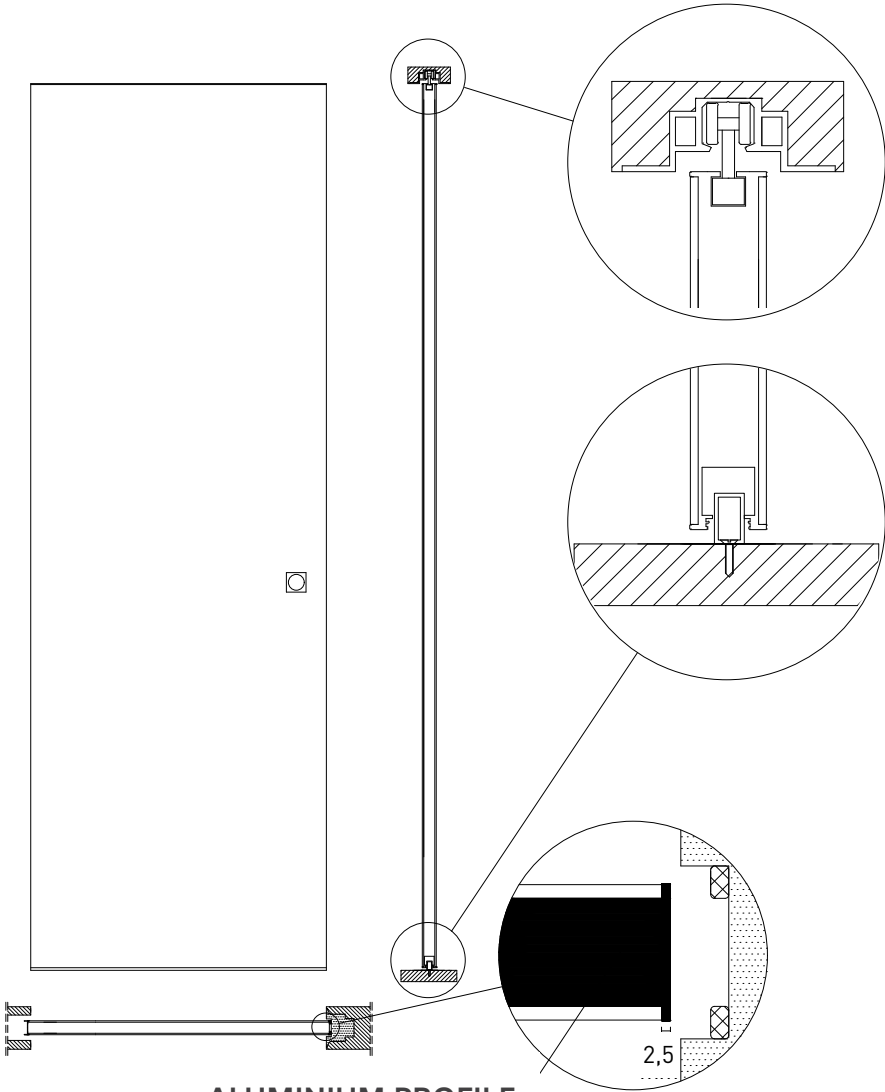
Glass with DV decoration in digital printing 2 sides
- CLB1 - CLB3

Beveled varnished glass

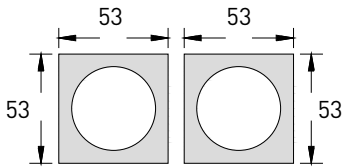


CL CLB-3 CLB-1

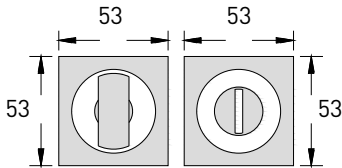
SLIDING DOOR
FOR BOXES
FLUSH TO THE WALL



ALUMINIUM PROFILE

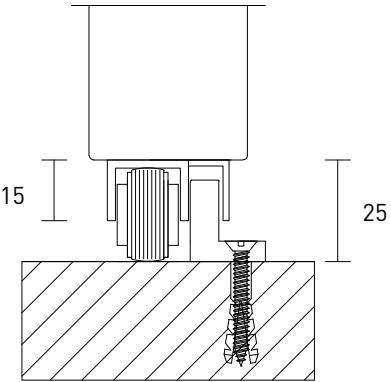
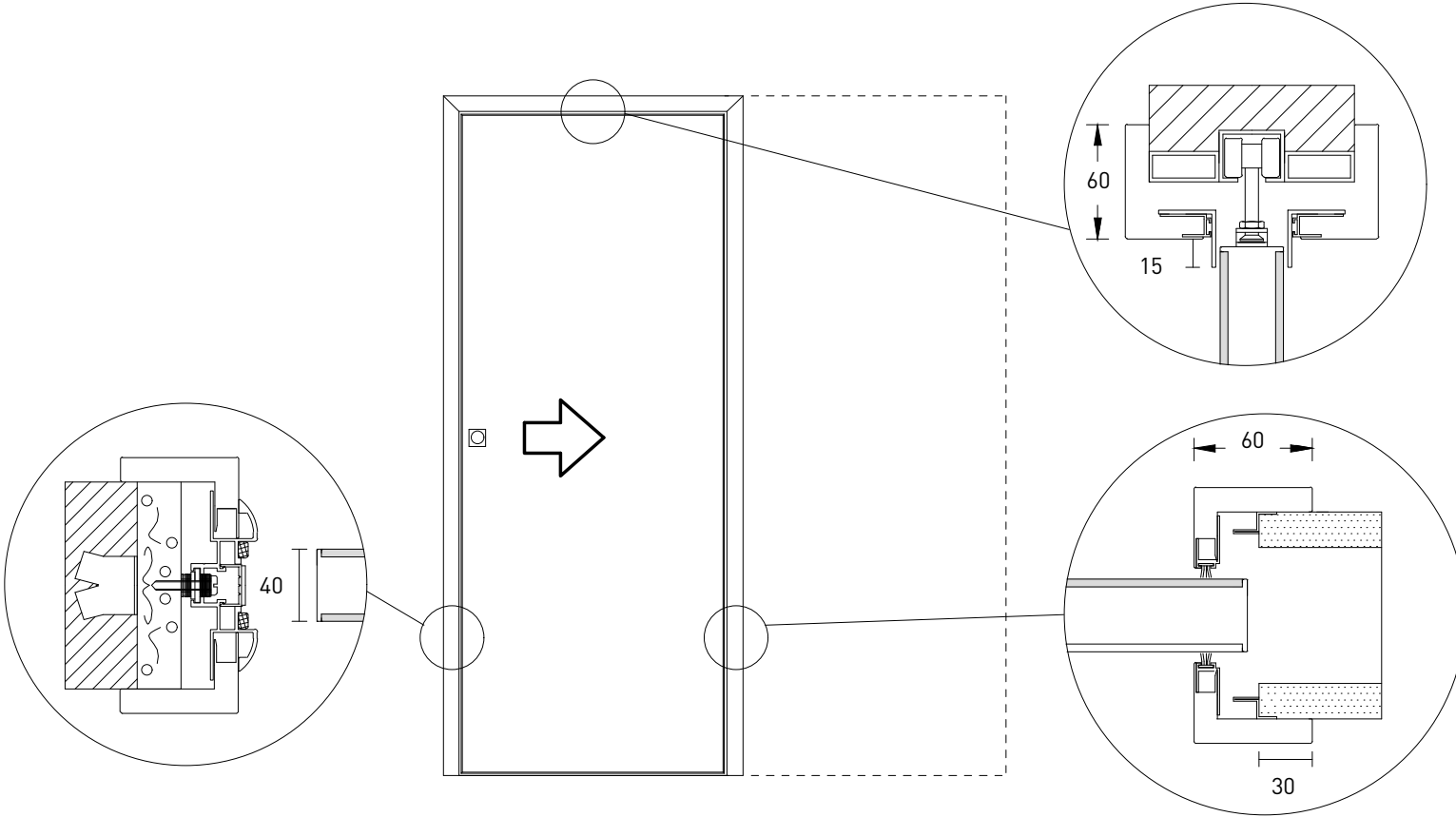


Niches standard
satin or polished chrome



Niches with
privacy latch with lock

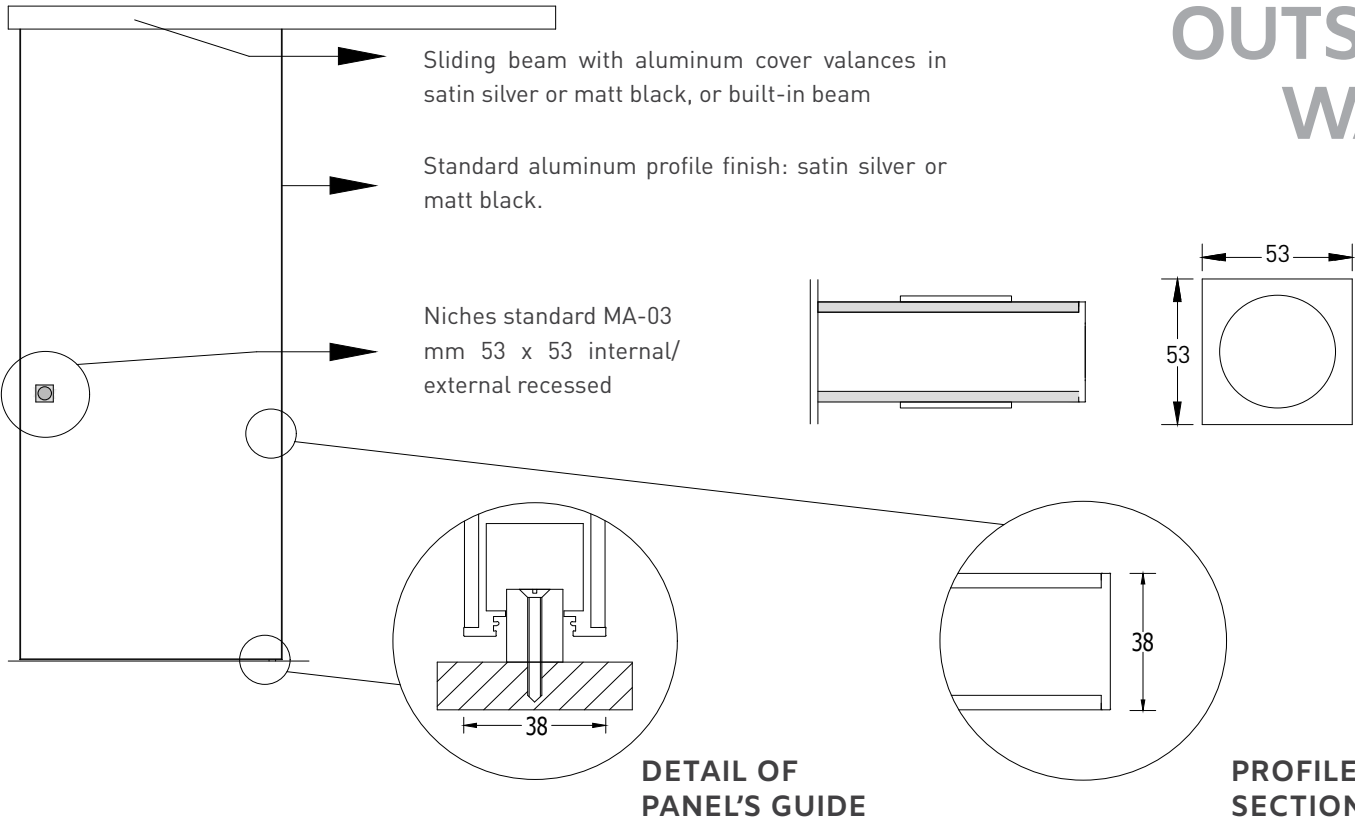
SLIDING DOOR
FOR CLASSIC
BOXES



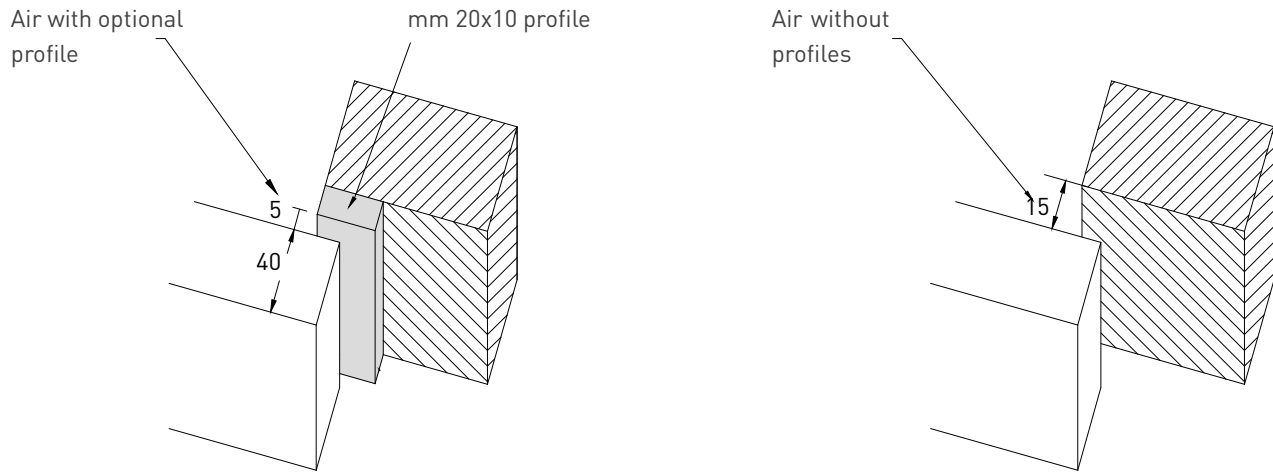
OPTIONAL FLOOR WHEEL :

The floor wheel is suitable for increasing the stability of the door, recommended for doors with dimensions greater than 100 cm in width, it must only be used in the presence of smooth floors without joints, such as parquet or resin.

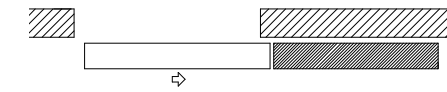
SLIDING DOOR OUTSIDE WALL



WALL PROFILE FOR AIR REDUCTION:
A 20 x 10 mm section profile can be installed on the wall to reduce the air between the door and the wall.



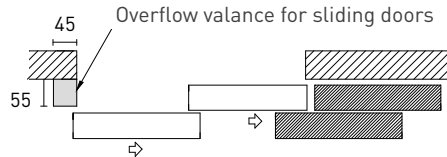
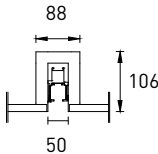
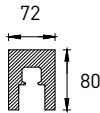
SLIDING OPENINGS*



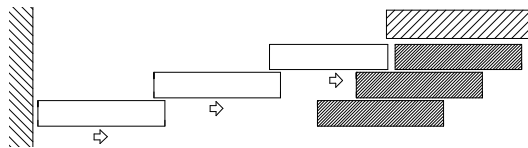
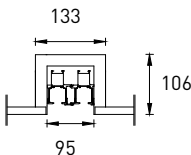
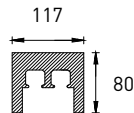
Sliding door with single rail, wall or ceiling attachment.
Also available in built-in version.

Beams with valance

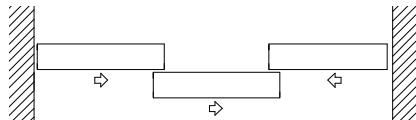
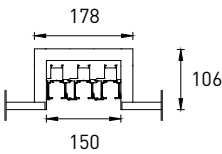
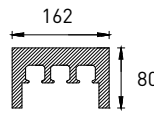
Adjustable recessed beams



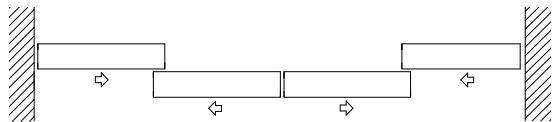
Double-panel door, two-way sliding beam with ceiling attachment. Also available in built-in version.



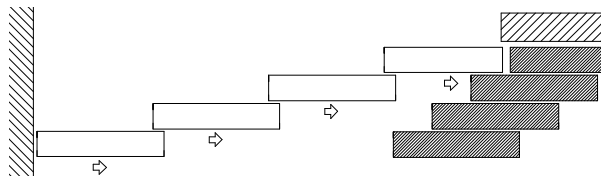
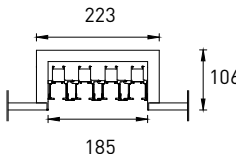
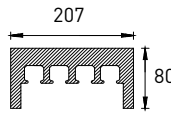
Three-panel door, three-way sliding beam with ceiling attachment. Also available in built-in version.



Three-panel door with two-way sliding beam with ceiling attachment. Also available in built-in version.



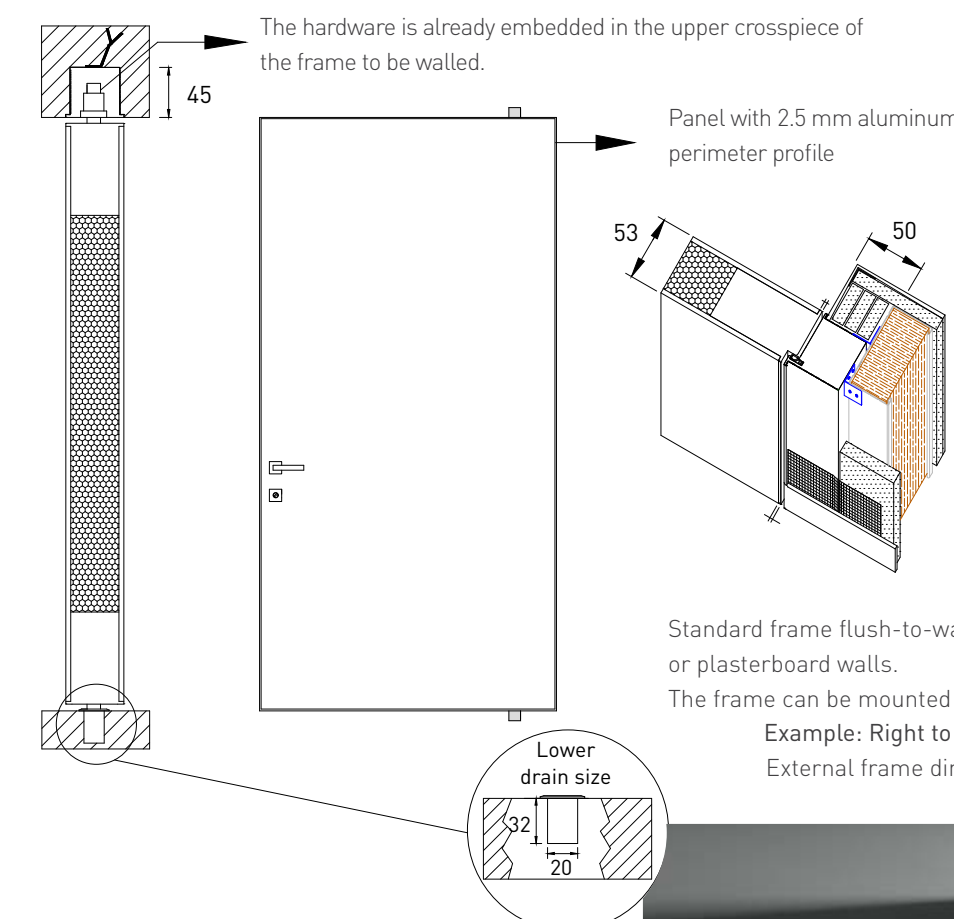
Four-panel door, two-way sliding beam with ceiling attachment. Also available in built-in version.



Four-panel door, four-way sliding beam with ceiling attachment. Also available in built-in version.

*examples of sliding openings based on the number of doors. It is possible, on request, to create other types of opening.

PIVOT MASTER

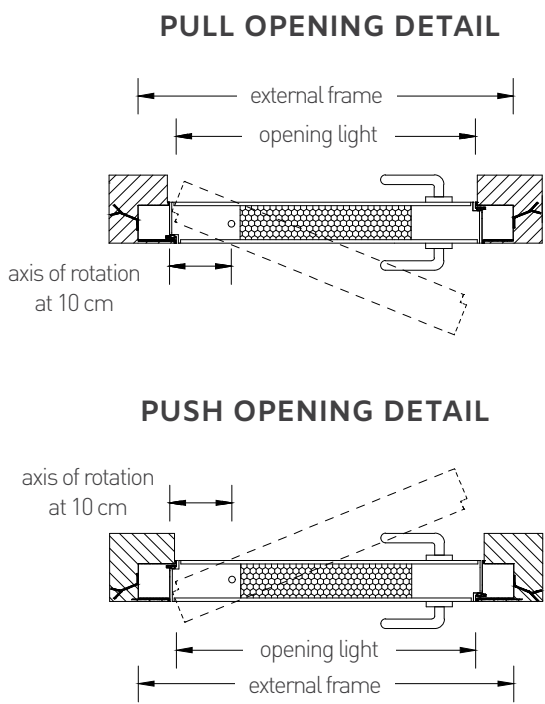


The hardware is already embedded in the upper crosspiece of the frame to be walled.

Panel with 2.5 mm aluminum perimeter profile

Complete door with flush-to-wall frame in satin silver aluminum for masonry or plasterboard walls, lock with standard magnetic latch for Patent key or privacy latch.

Standard frame flush-to-wall, in satin silver aluminum compatible for masonry or plasterboard walls.
The frame can be mounted to pull or push.
Example: Right to pull = Left to push
External frame dimensions = opening light + 100mm L and +45mm H



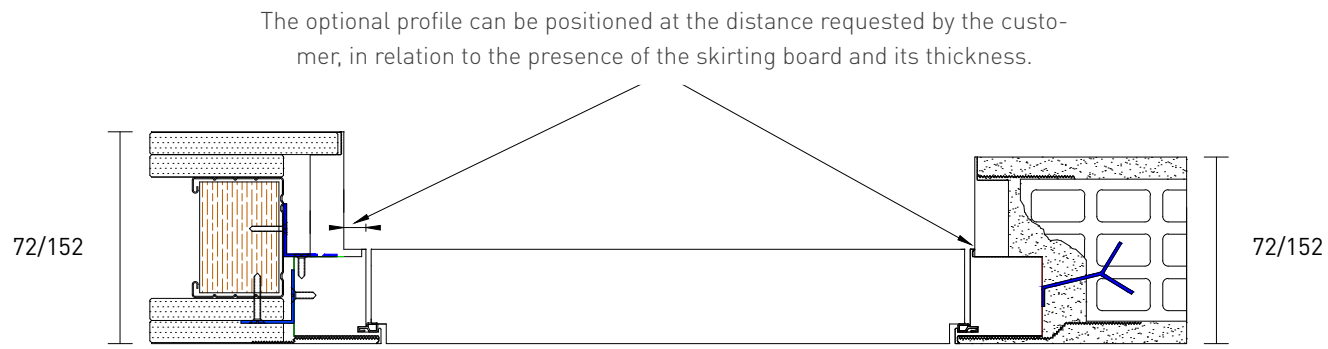
PULL OPENING DETAIL

PUSH OPENING DETAIL



OPTIONAL PROFILE FOR FRAME EXTENSION:

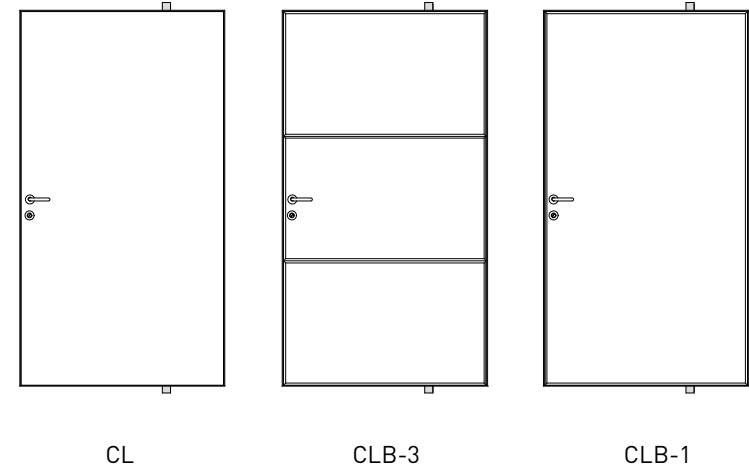
Raw aluminum profile, to be painted like the wall, made to measure with depth varying from 72 to 152 mm. The use of the optional profile facilitates the finishing of the wall thickness, optimizing working times on site.



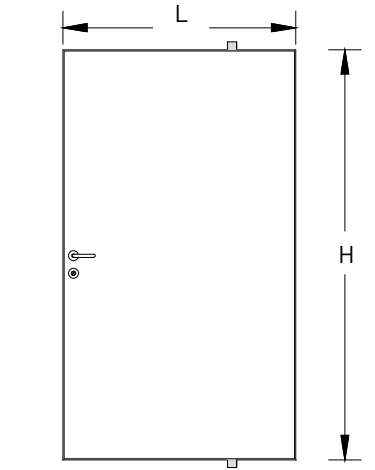
VARNISHED GLASSES AND MIRRORS:

CL: Varnished glass **SP:** Mirror **DV:** Varnished design **CLB:** Beveled varnished glass

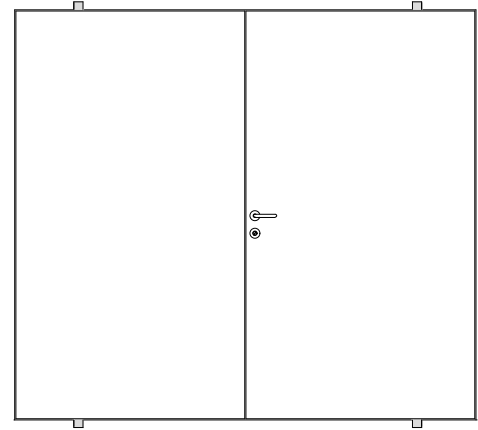
- CL** Varnished glass 2 sides our colors
- CL11** Varnished glass Ral to sample 2 sides
- CL12** Mineralized glass bronze 2 sides
- SP01,02,03** Mirror silver/bronze/fumé 2 sides
- SP5,6 - CL9,10** Varnished extra-clear satin glass 2 sides, white or Ral to sample
- DV** Silvered nervuré or Metropolis glass, or Ral.
- CLB1 - CLB3** Glass with DV decoration in digital printing 2 sides
- CLB1 - CLB3** Beveled varnished glass



PIVOT DOOR TYPES:



DOOR MADE TO MEASURE



DOUBLE PIVOT DOOR

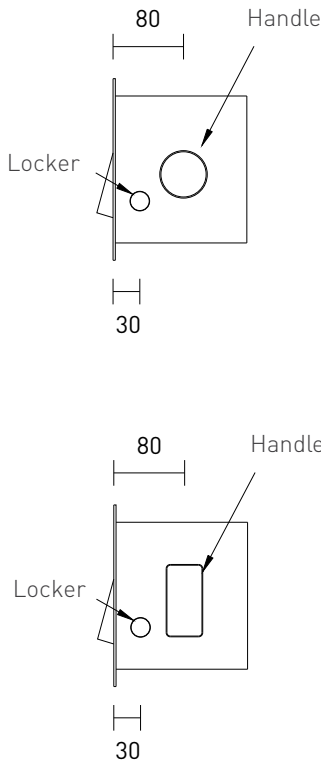
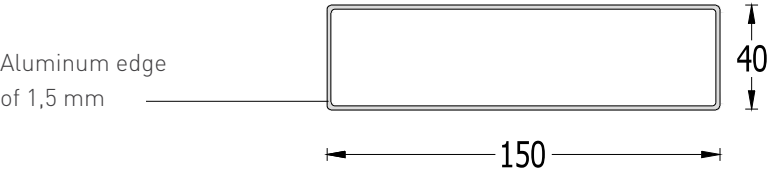
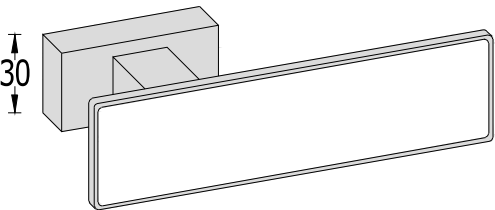
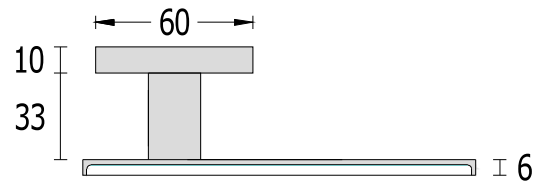
DATA
SHEETS

handles

REVOLUTION
HANDLE

Aluminum Revolution handle machined from solid, with a finish coordinated with the door profiles.


- Available typologies:
- solid aluminum handle, without insert
 - handle with matt lacquered MDF insert
 - handle with insert in glossy or satin lacquered glass
 - privacy latch in satin or glossy chrome



COPLANAR
HANDLE
MA13

The coplanar handle MA 13 is available in all the materials provided for the door. It is also possible to have the complete lock system with hermetic closure through or only from the inside.

Circular diameter 50 mm, Rectangular 43 x 85 mm H.
With or without locker.
(not available with key)

follow the link to see how it work 

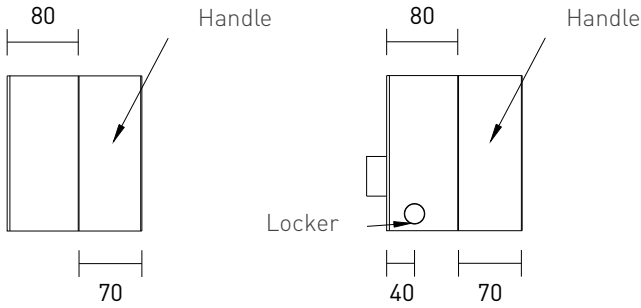


COPLANAR HANDLE

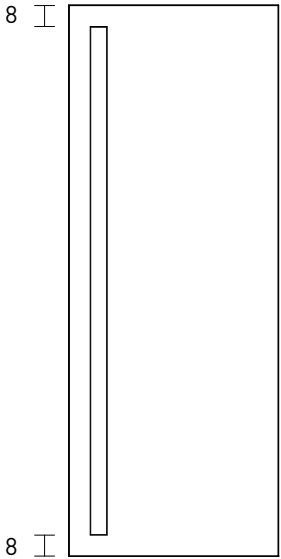
MA15

The handles available on this page provide for the elimination of the lock and the assembly of a magnet on the stop.

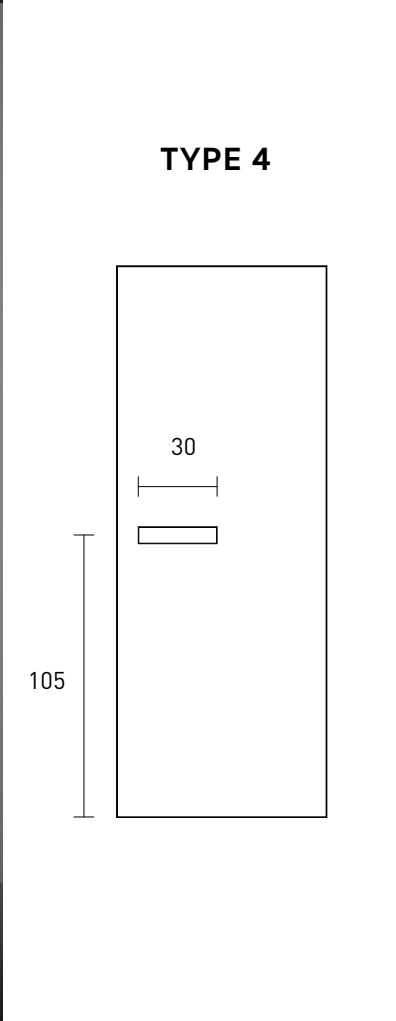
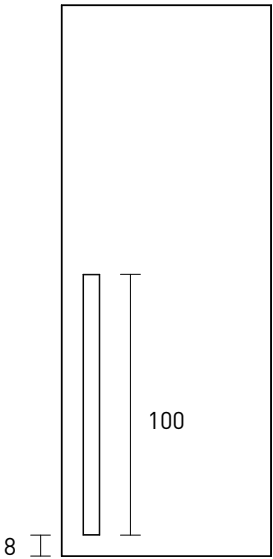
The customer can choose two different types of handles between the two sides of the door.



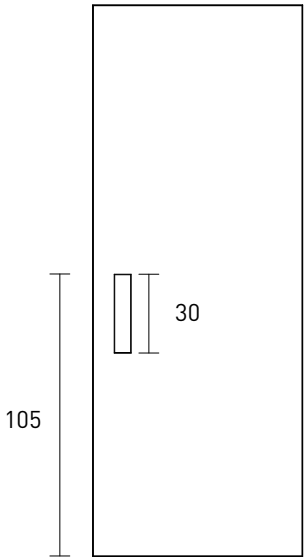
TYPE 1



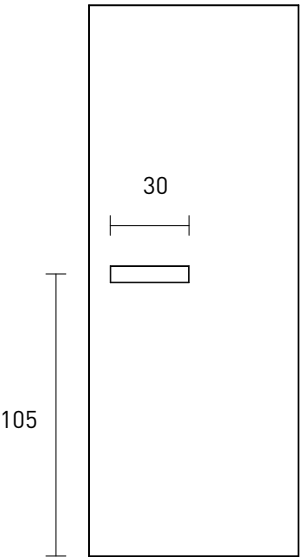
TYPE 2



TYPE 3



TYPE 4



follow the link to see how it work

TRADITIONAL HANDLES



TOTAL by Olivari



RADIAL by Olivari



H5015 by Fusital
design A.Citterio



QUADRA



REVOLUTION by Staino&Staino



SIRIO



H352 by Fusital
design O. Decq - B. Cornette



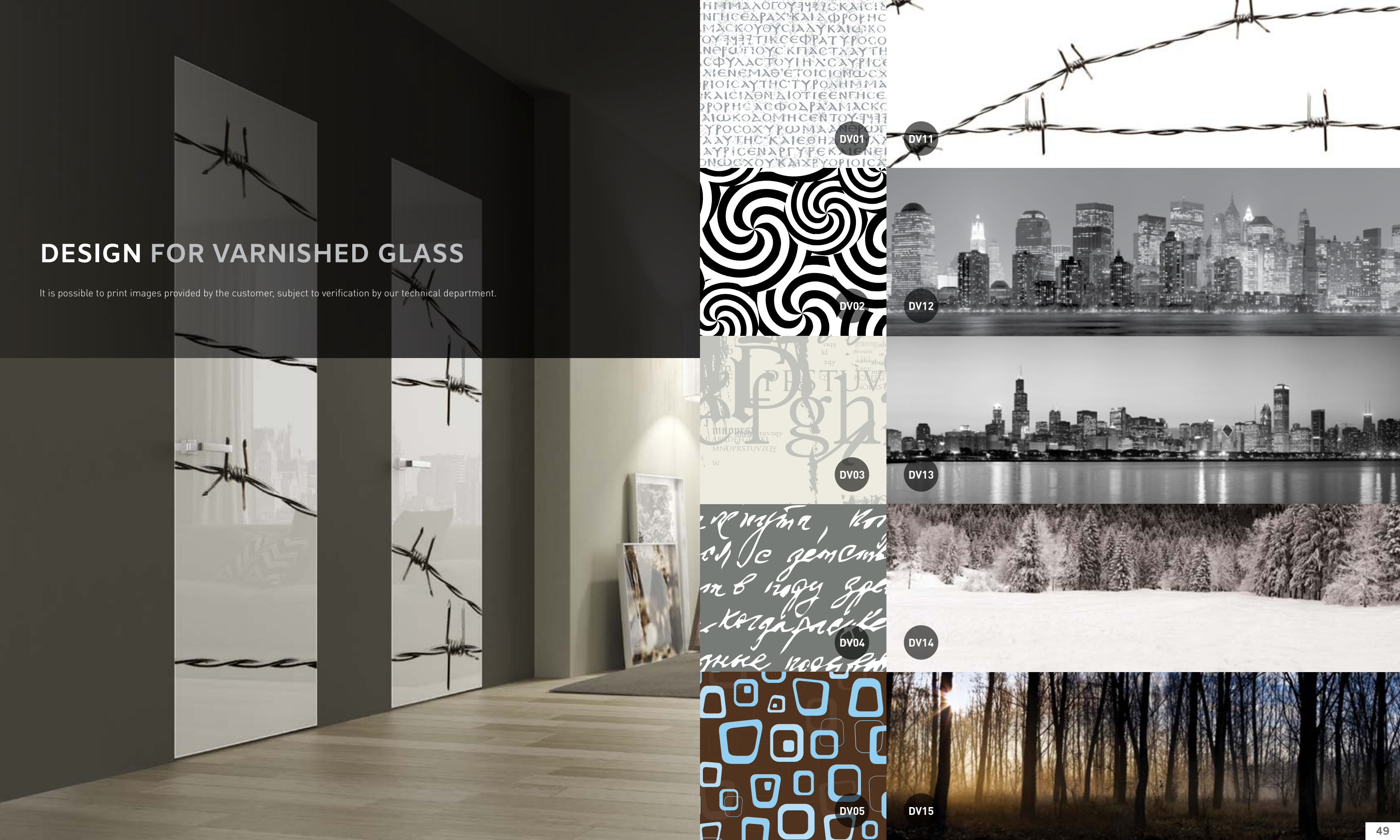
CONO



H5014 by Fusital

DESIGN FOR VARNISHED GLASS

It is possible to print images provided by the customer, subject to verification by our technical department.



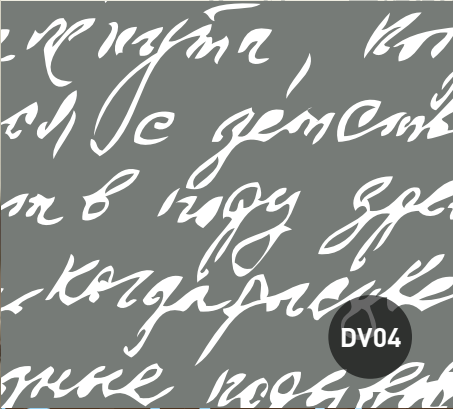
DV01



DV02



DV03



DV04



DV05



DV11



DV12



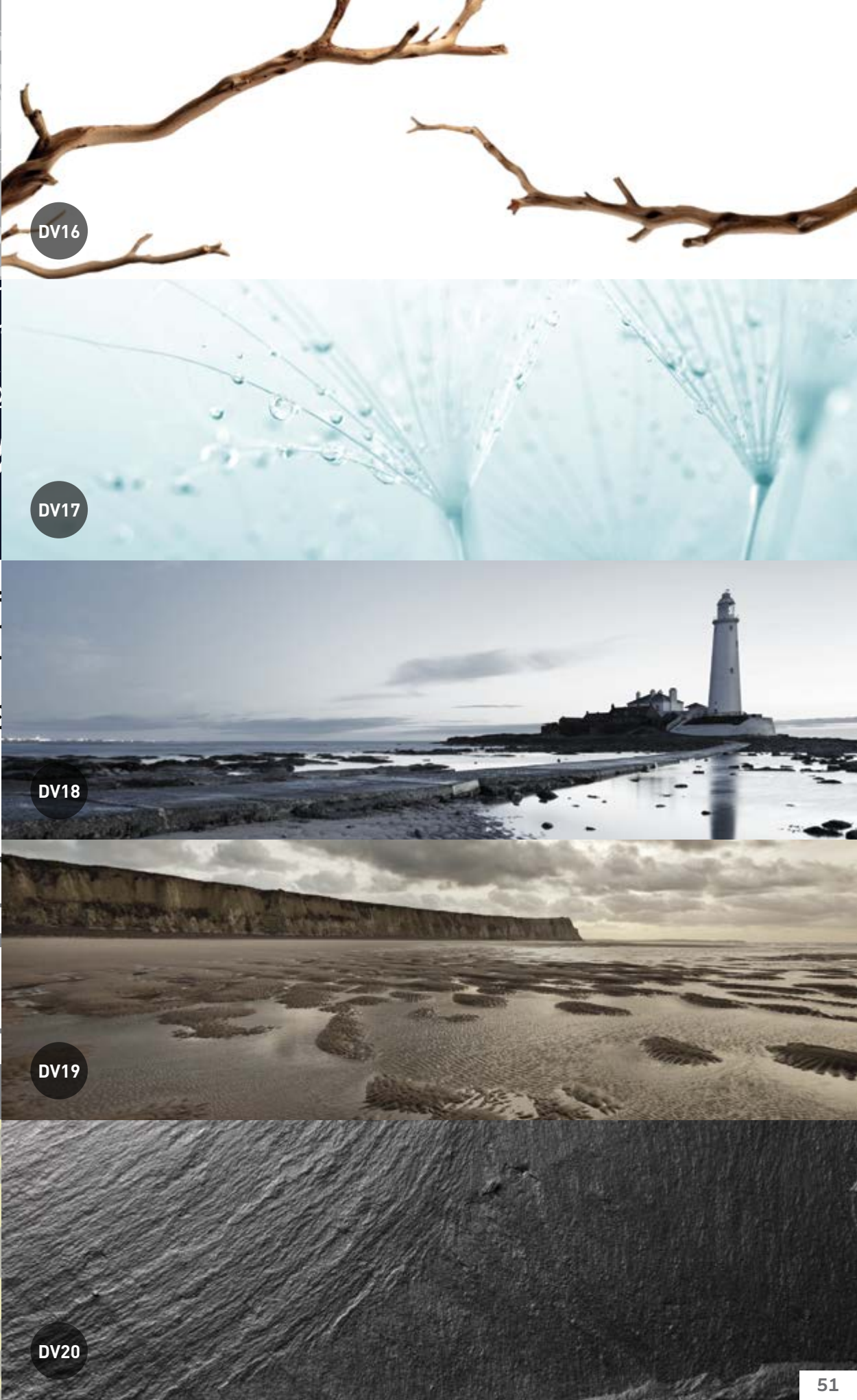
DV13



DV14



DV15



DV06

DV16

DV07

DV17

DV08

DV18

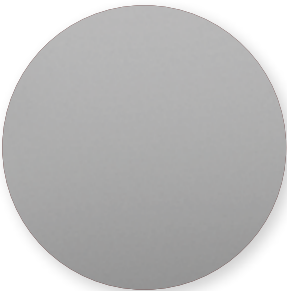
DV09

DV19

DV10

DV20

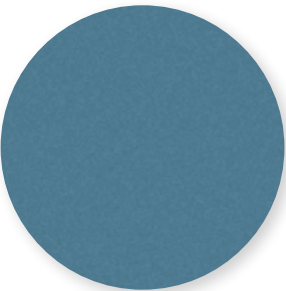
ALUMINUM PROFILES&GLASSES FINISHES



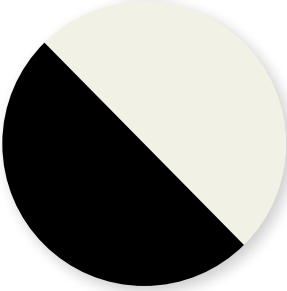
PA01
Glazed silver



PA08
Wenge wood



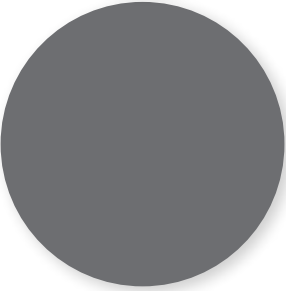
CR04
Frosted blue



PA02
Matt white
PA03
Matt black



PA09
Corten



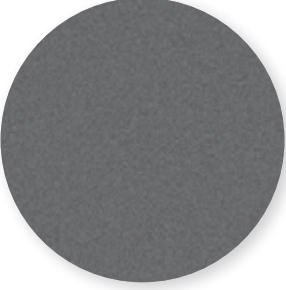
CR05
Clear fumé



PA04
Bright brushed silver



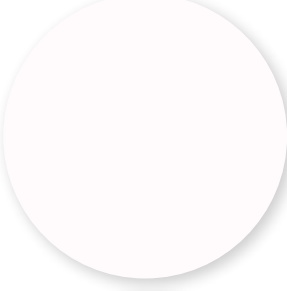
PA10
Drak bronze
PA11
Dark copper



CR06
Frosted fumé



PA05
Bronze



CR01
Clear



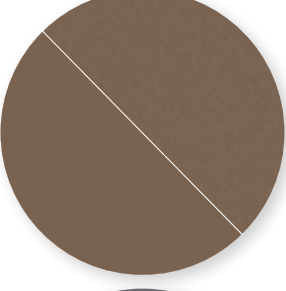
CR07
Frosted
extra cleare



PA06
Titanium



CR02
Frosted



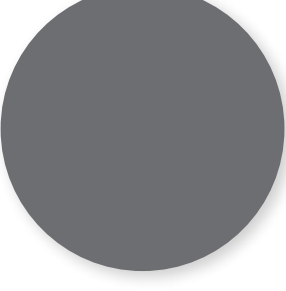
CR08
Frosted bronze
CR09
Clear bronze



PA07
White oak



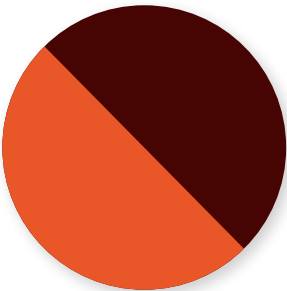
CR03
Milk white



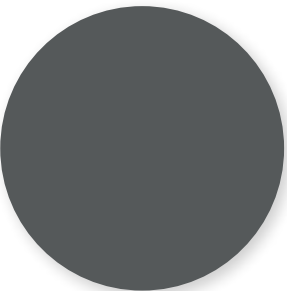
CR10
Reflective fumé

* finish available on sample

VARNISHED GLASSES&MIRRORS FINISHES



CL01
Burgundry red
CL02
Orange



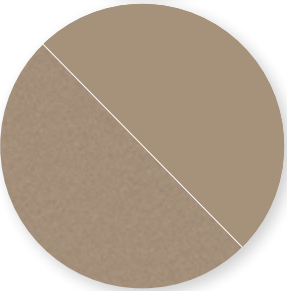
CL13
British grey 7011



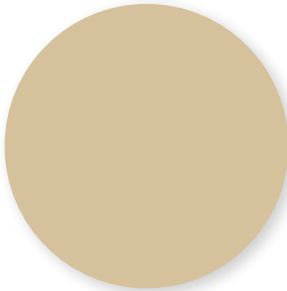
SP01
Regular mirror



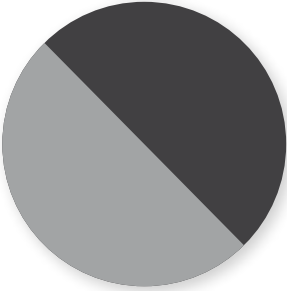
CL03
Extra white
CL04
Black



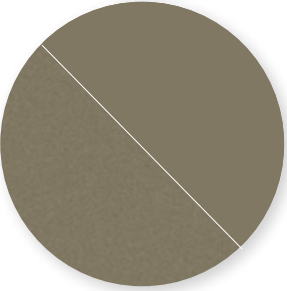
CL14
Cappuccino 1019
CL15
Frosted cappuccino 1019



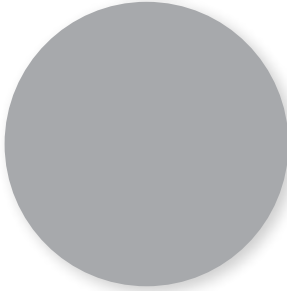
SP02
Bronze mirror



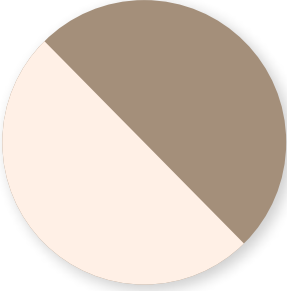
CL05
Anthracite
CL06
Silver



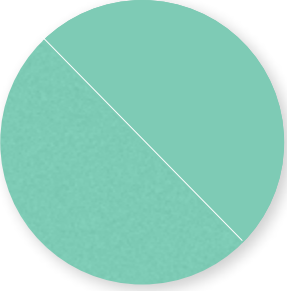
CL16
Green Army 7002
CL17
Frosted green Army 7002



SP03
Fumé mirror



CL07
Beige
CL08
Pink grey 2005



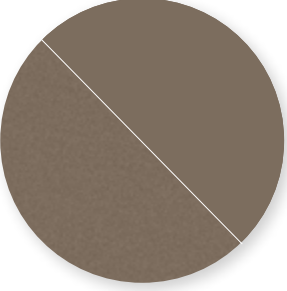
CL18
Miami green 6027
CL19
Frosted Miami green 6027



SP04
Glazed mirror



CL09
Metropoli black
CL10
Nervuré black



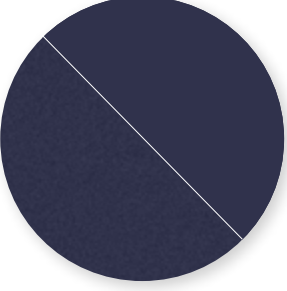
CL20
Visone 7006
CL21
Frosted visone 7006



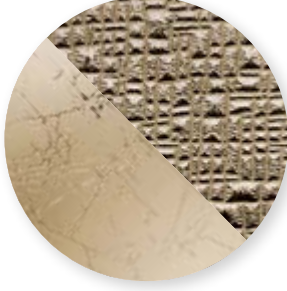
SP05
Nervuré glazed silver



CL11
Metallized bronze
CL12
Varnished frosted extra white



CL22
J.P.Blu
CL23
Frosted J.P.Blu



SP06
Nervuré glazed bronze
SP08
Metropoli glazed bronze

* finish available on sample

STAINO&STAINO SRL Via Danubio, 21/23/25
59100 Prato - Italy | Tel +39 0574 69 39 38
Fax +39 0574 69 43 55

www.stainoestaino.com

amministrazione@stainoestaino.it
commerciale@stainoestaino.it
export@stainoestaino.it